

Leica Geosystems Release Notes

Product Leica CloudWorx 2020.0.1 for AutoCAD
Date 1 June 2020
From HDS Software Product Management

Contents

WHAT'S NEW	2
Support for AutoCAD 2021	2
Support for LGS in multiple documents	2
Improved TruSpace Measuring.....	2
TruSpace Settings	3
Fit Adjust	4
BUG FIXES.....	4
UX Bugs.....	4
LEICA CLOUDWORX 2020.0.1 COMPATIBILITY AND UPGRADES	5
Upgrading to Leica CloudWorx 2020.0.1 for AutoCAD from Leica CloudWorx 2020.0.0 for AutoCAD	5
Compatibility with Leica CloudWorx 2020.0.1 for AutoCAD AND AutoCAD Versions	5
Compatibility with JetStream Enterprise	5
Compatibility with CloudWorx Ultimate.....	5
KNOWN ISSUES	5
Installing CLM while JetStream service is running	5
Modified Usage for Asian Languages.....	6
Switching JetStream server with JetStream project open.....	6
Equivalent user permissions requirement.....	6
Temporary ModelSpace	6
LGS usage over network.....	6
LICENSING	6

What's New

This is a minor release including support for AutoCAD 2021 and TruSpace improvements.

Support for AutoCAD 2021

With the release of CloudWorx 2020.0.1 for AutoCAD, the software is now compatible with AutoCAD 2021.

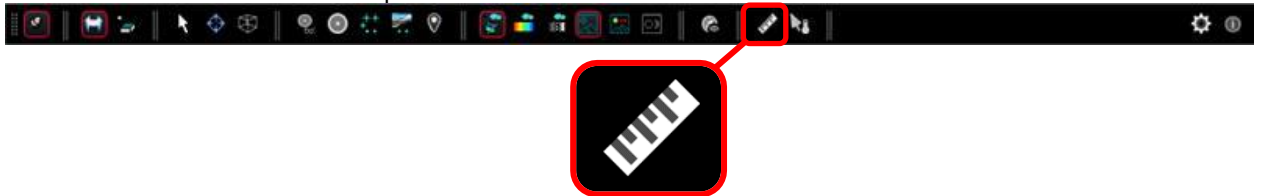
Support for LGS in multiple documents

With the release of CloudWorx 2020.0.1 for AutoCAD, users can now open multiple AutoCAD documents, each with one LGS file, simultaneously. The LGS files may be the same or different per document. Users may still only open a single LGS file per document.

Improved TruSpace Measuring

With this release, users will now experience a consistent measurement interface across CloudWorx TruSpace, JetStream Viewer and Cyclone REGISTER 360. To activate the new measurement tool:

1. Select the Measure icon from the top tool bar



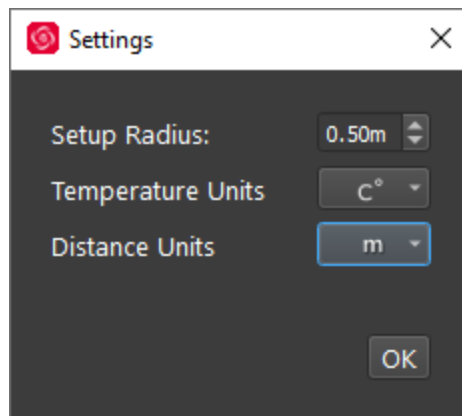
2. Select two points in the TruSpace
3. Your measurement will be displayed with the coordinate of each point and the overall distance and point deltas.



TruSpace Settings

With this release, settings for TruSpace tools have been clustered into a Settings menu to simplify the toolbar and consolidate similar functions. To access Settings:

1. Select the Settings button from the toolbar
2. You can change the following settings:
 - a. Setup Radius
 - b. Temperature Units
 - c. Distance Units



Settings are applied at a project level and apply to viewing within the navigation pane as well as to Snapshots and Markups. Settings are saved and preserved for subsequent sessions until changed by the user.

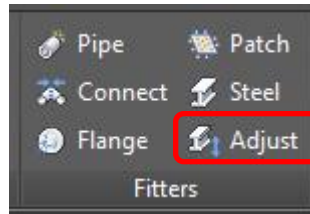
Fit Adjust

With this release, users can now extend the extents of objects within a drawing to improve the results of auto extraction. The following objects can be adjusted:

- Steel
- Pipes
- Cylinders
- Lines

To adjust the extents of an object:

1. Select the **Adjust** tool OR use the command line and enter CWFITADJUST



2. Select the object.
3. Click near the edge of the object that you wish to adjust and move your mouse until the element reaches the desired extent and then click to place.



Bug Fixes

UX Bugs

- Corrected a bug which caused Steel objects imported as COE from correctly detecting interference and clashing.

- Corrected a bug which could prevent ArcGIS from running at the same time as CloudWorx for AutoCAD.

Leica CloudWorx 2020.0.1 Compatibility and Upgrades

Upgrading to Leica CloudWorx 2020.0.1 for AutoCAD from Leica CloudWorx 2020.0.0 for AutoCAD

You must have Administrator-level privileges on your workstation to correctly install Leica CloudWorx software.

If using IMP data, first run the current Cyclone installer if you do not have a version of Cyclone installed. Otherwise/Next run the CloudWorx 2020.0.1 installer and follow the directions to proceed with the installation. Please heed the warning message about compatibility of earlier version databases. We strongly recommend that users not use the “Repair” option when upgrading. Rather, users should select “Remove” when it appears and then run the installer again to install the new version.

Compatibility with Leica CloudWorx 2020.0.1 for AutoCAD AND AutoCAD Versions

CloudWorx 2020.0.1 for AutoCAD officially supports Autodesk AutoCAD versions 2016-2021

Compatibility with JetStream Enterprise

CloudWorx 2020.0.1 for AutoCAD is compatible with JetStream Enterprise 1.3 and higher. To access the latest features, it is recommended that users update to the latest release of JetStream Enterprise 2020.

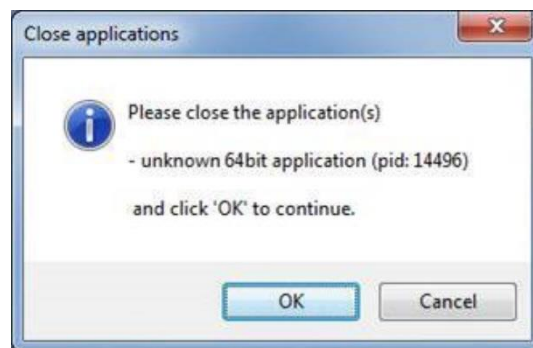
Compatibility with CloudWorx Ultimate

CloudWorx 6.3.1 (or later) for AutoCAD is compatible with the CloudWorx Ultimate License.

Known Issues

Installing CLM while JetStream service is running

During installation of CLM, users may encounter the following error message. This is commonly due to a service like JetStream running in the background.



To enable the successful installation of CLM, please follow these steps:

- Launch the task manager
- Select the Services tab

- Look up the process with the PID (Process ID) shown in the Close applications dialog
- In this case it is JetStream
- Terminate the process so that CLM can be installed
- After CLM is installed, click on the Services button in the Task Manager and restart the service

Modified Usage for Asian Languages

Some actions and windows do not execute properly when operating CloudWorx in an Asian language.

Switching JetStream server with JetStream project open

CloudWorx does not support switching JetStream servers while a JetStream project is open. Upon attempting this action, the user will receive a message which states, "You already have a CloudWorx project open." Users should close the active project before switching JetStream servers.

Equivalent user permissions requirement

When working with IMP data, AutoCAD must be run with the same level of user privileges as Cyclone was originally configured with. Meaning if Cyclone is configured to Run As Administrator, then AutoCAD should be Run As Administrator to connect to Cyclone and open an IMP.

Temporary ModelSpace

When working with IMP data, users may see a temporary ModelSpace created within Cyclone to support rendering in CloudWorx. All ModelSpace views are temporary and will not be permanently added to a project. It is not a requirement that Cyclone be running while using CloudWorx.

LGS usage over network

The use of LGS files is only officially supported when the files are saved locally. Due to variations between network deployments LGS files may be unreliable when hosted in a network location.

Licensing

All users with valid CCP, or with CCP valid as late as 25 January 2020, can run this new version with no new license required.