

Leica Geosystems Release Notes

Product Leica CloudWorx 2020.0.1 for Bentley
Date 09 June 2020
From HDS Software Product Management

Contents

| | |
|--|----------|
| WHAT'S NEW | 2 |
| Support for OpenBuildings Designer CONNECT | 2 |
| Support for AECOSim Building Designer CONNECT | 2 |
| Improved TruSpace Measuring..... | 2 |
| TruSpace Settings | 3 |
| BUG FIXES..... | 4 |
| UX Bugs | 4 |
| LEICA CLOUDWORX 2020.0.1 COMPATIBILITY AND UPGRADES | 4 |
| Upgrading to Leica CloudWorx 2020.0.1 for Bentley from Leica CloudWorx 2020.0.0 for MicroStation..... | 4 |
| Compatibility with Leica CloudWorx 2020.0.1 for Bentley AND Bentley product Versions..... | 4 |
| Compatibility with JetStream Enterprise | 4 |
| Compatibility with CloudWorx Ultimate..... | 4 |
| KNOWN ISSUES | 4 |
| Installing CLM while JetStream service is running | 4 |
| Switching JetStream server with a JetStream project open | 5 |
| Temporary ModelSpace | 5 |
| Equivalent user permissions requirement..... | 5 |
| TruSpace HDS Auto-Brightness | 5 |
| LICENSING | 5 |

What's New

This is a minor release including support for two additional Bentley products—OpenBuildings Designer and AECOSim, allowing users to take advantage of the benefits of these tools from Bentley. This release also includes improvements to TruSpace.

Support for OpenBuildings Designer CONNECT

With this release, users can now access CloudWorx from the OpenBuildings Designer version of CONNECT. Installing CloudWorx for Bentley OpenBuildings Designer uses the same installer as CloudWorx for MicroStation.

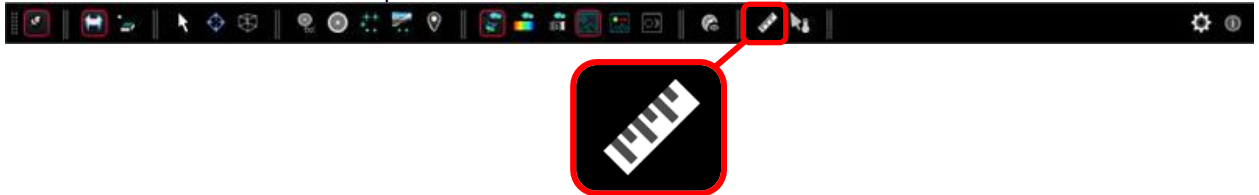
Support for AECOSim Building Designer CONNECT

With this release, users can now access CloudWorx from the AECOSim version of CONNECT. Installing CloudWorx for Bentley AECOSim Buildings Designer uses the same installer as CloudWorx for MicroStation.

Improved TruSpace Measuring

With this release, users will now experience a consistent measurement interface across CloudWorx TruSpace, JetStream Viewer and Cyclone REGISTER 360. To activate the new measurement tool:

1. Select the Measure icon from the top tool bar



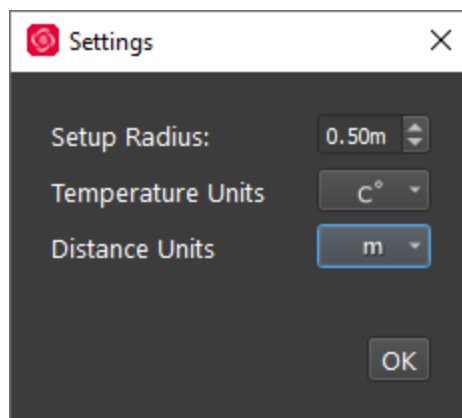
2. Select two points in the TruSpace
3. Your measurement will be displayed with the coordinate of each point and the overall distance and point deltas.



TruSpace Settings

With this release, settings for TruSpace tools have been clustered into a Settings menu to simplify the toolbar and consolidate similar functions. To access Settings:

1. Select the Settings button from the toolbar
2. You can change the following settings:
 - a. Setup Radius
 - b. Temperature Units
 - c. Distance Units



Settings are applied at a project level and apply to viewing within the navigation pane as well as to Snapshots and Markups. Settings are saved and preserved for subsequent sessions until changed by the user.

Bug Fixes

UX Bugs

- Improved support for Japanese OS.
- Improved stability of working with LGS files with many references.

Leica CloudWorx 2020.0.1 Compatibility and Upgrades

Upgrading to Leica CloudWorx 2020.0.1 for Bentley from Leica CloudWorx 2020.0.0 for MicroStation

You must have Administrator-level privileges on your workstation to correctly install Leica CloudWorx software.

If using IMP data, first run the current Cyclone installer if you do not have a version of Cyclone installed. Otherwise/Next run the CloudWorx 2020.0.1 installer and follow the directions to proceed with the installation. Please heed the warning message about compatibility of earlier version databases. We strongly recommend that users not use the “Repair” option when upgrade. Rather, users should select “Remove” when it appears and then run the setup again to install the new version.

Compatibility with Leica CloudWorx 2020.0.1 for Bentley AND Bentley product Versions

CloudWorx 2020.0.1 for Bentley officially supports MicroStation versions J-V8i and CONNECT, AECOsim Buildings Designer CONNECT Edition Update 4 and OpenBuildings Designer CONNECT Edition Update 5 and 6.

Compatibility with JetStream Enterprise

CloudWorx 2020.0.1 for Bentley is compatible with JetStream Enterprise 1.3 and higher. To access the latest features, it is recommended that users update to the latest release of JetStream Enterprise 2020.

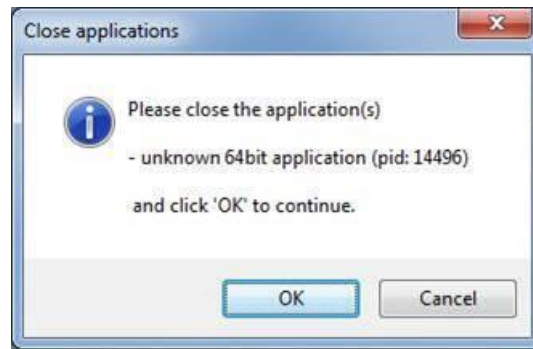
Compatibility with CloudWorx Ultimate

CloudWorx 5.1.3 (or later) for MicroStation is compatible with the CloudWorx Ultimate License. CloudWorx 2020.0.1 (or later) for Bentley is compatible with the CloudWorx Ultimate License.

Known Issues

Installing CLM while JetStream service is running

During installation of CLM, users may encounter the following error message. This is commonly due to a service like JetStream running in the background.



To enable the successful installation of CLM, please follow these steps:

- Launch the task manager
- Select the Services tab
- Look up the process with the PID (Process ID) shown in the Close applications dialog
- In this case it is JetStream
- Terminate the process so that CLM can be installed
- After CLM is installed, click on the Services button in the Task Manager and restart the service

Switching JetStream server with a JetStream project open

CloudWorx does not support switching JetStream servers while a JetStream project is open. Upon attempting this action, the user will receive a message which states, “You already have a CloudWorx project open.” Users should close the active project before switching JetStream servers.

Temporary ModelSpace

When working with IMP data, users may see a temporary ModelSpace created within Cyclone to support rendering in CloudWorx. All ModelSpace views are temporary and will not be permanently added to a project. It is not a requirement that Cyclone be running while using CloudWorx.

Equivalent user permissions requirement

When working with IMP data, the Bentley product must be run with the same level of user privileges as Cyclone was originally configured with. Meaning if Cyclone is configured to Run As Administrator, then the Bentley product should be Run As Administrator to connect to Cyclone and open an IMP.

TruSpace HDS Auto-Brightness

In certain scenarios, the auto brightness setting for HDR images in TruSpace will not re-activate after being turned off and the brightness being manually adjusted. The workaround is to pan around the scene prior to re-engaging auto-brightness or adjust the brightness to the highest level then re-engage auto-brightness.

Licensing

All users with a currently valid CCP, or with CCP valid as late as 25 January 2020, can run this new version with no new license required.

Owners of CloudWorx for MicroStation licenses with active CCP or CCP which was active as of 25 January 2020 will immediately have access to CloudWorx for AECOsim Buildings Designer and OpenBuildings Designer.