

Leica Geosystems Release Notes

Product Leica CloudWorx 2021.0.2 for BricsCAD
Date 22 July 2021
From HDS Software Product Management

Contents

WHAT'S NEW	2
BUG FIXES	2
LEICA CLOUDWORX 2021.0.2 COMPATIBILITY AND UPGRADES	2
Upgrading to Leica CloudWorx 2021.0.2 for BricsCAD from Leica CloudWorx 2020.0.1 for BricsCAD	2
Compatibility with Leica CloudWorx 2021.0.2 for BricsCAD AND BricsCAD Versions	2
Compatibility with JetStream Enterprise	2
Compatibility with Cyclone ENTERPRISE	2
Compatibility with CloudWorx Ultimate	2
Deprecated Features	2
KNOWN ISSUES	3
CloudWorx toolbar is missing after installation	3
Unusual empty margin when viewing in perspective	4
Installing CLM while the JetStream service is running	4
Modified Usage for Asian Languages	4
Switching the JetStream Enterprise server with a JetStream Enterprise project open	4
Temporary ModelSpace	4
Equivalent user permissions requirement	4
Importing MultiStation Data	5
TruSpace HDS Auto-Brightness	5
LGS usage over network	5
LICENSING	5

What's New

This is a minor bug-fixing release. Please refer to the Licensing section for information about CCP requirements.

Bug Fixes

- Fixed a bug that could result in the Manage Connection Dialog persisting after opening a Cyclone ENTERPRISE file.
- Cyclone 2021.1 fixed a bug that resulted in MS60 data loaded as IMP being pixelated. Please ensure you are running the corresponding Cyclone version in order to see the results of this bug fix in CloudWorx.
- fixed a bug that prevented a CloudWorx project containing a relocated LGS to allow that file to be replaced.
- Fixed a bug to improve the quality and consistency of orthoimage results.
- Fixed a bug that caused CloudWorx to consume multiple connectors unnecessarily.

Leica CloudWorx 2021.0.2 Compatibility and Upgrades

Upgrading to Leica CloudWorx 2021.0.2 for BricsCAD from Leica CloudWorx 2020.0.1 for BricsCAD

You must have Administrator-level privileges on your workstation to correctly install Leica CloudWorx software.

If using IMP data, first run the current Cyclone installer if you do not have a version of Cyclone installed. Otherwise/Next run the CloudWorx 2021.0.2 installer and follow the directions to proceed with the installation. Please heed the warning message about compatibility of earlier version databases. We strongly recommend that users not use the "Repair" option when upgrade. Rather, users should select "Remove" when it appears and then run the setup again to install the new version.

Compatibility with Leica CloudWorx 2021.0.2 for BricsCAD AND BricsCAD Versions

CloudWorx 2021.0.2 for BricsCAD officially supports BricsCAD Pro and Platinum versions V18.2 through V21.

Compatibility with JetStream Enterprise

CloudWorx 2021.0.2 for BricsCAD is compatible with JetStream Enterprise 1.3 and higher. To access the latest features, it is recommended that users update to the latest release of JetStream Enterprise 2020.1.

Compatibility with Cyclone ENTERPRISE

CloudWorx 2021.0.2 for BricsCAD is compatible with Cyclone ENTERPRISE 2021.0.0 and higher.

Compatibility with CloudWorx Ultimate

CloudWorx for BricsCAD is not included in the CloudWorx Ultimate License.

Deprecated Features

Leica Geosystems strives to provide support for the widest array of operating systems and file formats possible as is reasonable given current technologies and support from third-party partners.

With each release, we review our list of currently supported formats and operating systems in line with industry trends and announced product terminations.

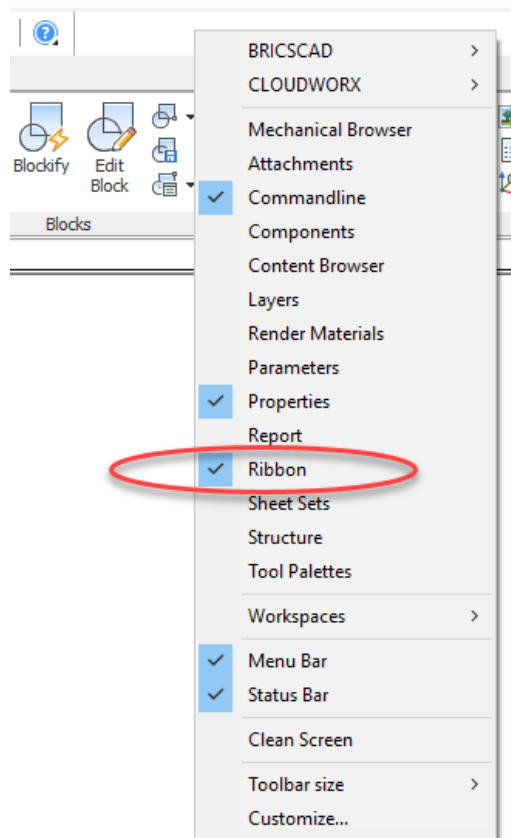
Leica Geosystems may add or terminate support for a file format during any release. Obsolete operating systems will be supported for six months after their announced termination or the next major software release, whichever comes first. Server products will be supported in alignment with Leica's Client License Manager (CLM) supported servers to guard users against incompatibility.

Please reference the Leica Geosystems Deprecated Features policy for a complete listing of discontinued features, formats and operating systems.

Known Issues

CloudWorx toolbar is missing after installation

BricsCAD does not show the Ribbon toolbar by default. As such, a user may need to enable it to properly see all the CloudWorx tools. To do so, right-click on the toolbar, and select 'Ribbon' to turn it on.

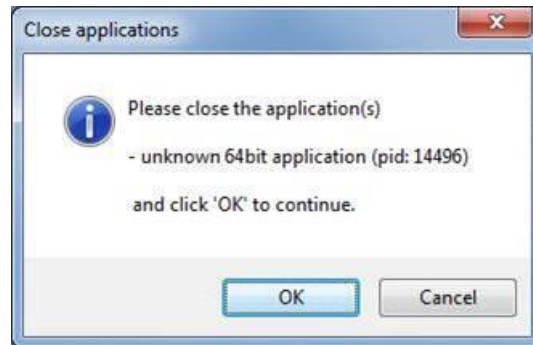


Unusual empty margin when viewing in perspective

Users will experience an unusual empty border around their point cloud view when view is launched from TruSpace. Due to the nature of perspective rendering, the issue is exaggerated when the user zooms as well as when the viewing window is wider (e.g., 16:9 ratio).

Installing CLM while the JetStream service is running

During installation of CLM, users may encounter the following error message. This is commonly due to a service like JetStream running in the background.



To enable the successful installation of CLM, please follow these steps:

- Launch the task manager
- Select the Services tab
- Look up the process with the PID (Process ID) shown in the Close applications dialog
- In this case it is JetStream
- Terminate the process so that CLM can be installed
- After CLM is installed, click on the Services button in the Task Manager and restart the service

Modified Usage for Asian Languages

Some actions and dialogs do not execute properly when operating CloudWorx in an Asian language.

Switching the JetStream Enterprise server with a JetStream Enterprise project open

CloudWorx does not support switching JetStream Enterprise servers while a JetStream Enterprise project is open. Upon attempting this action, the user will receive a message which states, "You already have a CloudWorx project open." Users should close the active project before switching servers.

Temporary ModelSpace

When working with IMP data, users may see a temporary ModelSpace created within Cyclone to support rendering in CloudWorx. All ModelSpace views are temporary and will not be permanently added to a project. It is not a requirement that Cyclone be running while using CloudWorx.

Equivalent user permissions requirement

When working with IMP data, BricsCAD must be run with the same level of user privileges as Cyclone was originally configured with. Meaning if Cyclone is configured to Run As Administrator, then BricsCAD should be Run As Administrator to connect to Cyclone and open an IMP.

Importing MultiStation Data

There may be a delay when importing MultiStation data into CloudWorx for BricsCAD. Users may see an error message which states that the server is not available, however this message will disappear and data will be imported as expected

TruSpace HDS Auto-Brightness

In certain scenarios, the auto brightness setting for HDR images in TruSpace will not re-activate after being turned off and the brightness being manually adjusted. The workaround is to pan around the scene prior to re-engaging auto-brightness or adjust the brightness to the highest level then re-engage auto-brightness.

LGS usage over network

The use of LGS files is only officially supported when the files are saved locally. Due to variations between network deployments, LGS files may be unreliable when published to or hosted in a network location.

Licensing

All users with currently valid CCP, or with CCP valid as late as 13 December 2020, can run this new version with no new license required.