

Leica Geosystems Release Notes

Product Leica JetStream Enterprise 2022.0.1
Date 15 April 2022
From Reality Capture Software Product Management

Contents

What's New	2
Windows 11 Support	2
Publish LGS files without SiteMap	2
CLM 2.5 Support	2
Bug Fixes	2
Upgrades & Compatibility	2
LGS file compatibility	2
Leica JetStream Enterprise Upgrades and Compatibility	3
Leica Reality Capture Software Products Version Compatibility	4
Migrating locations	4
Deprecated features	4
Known Issues	5
Usage file reporting issue for EnterpriseElite Customers	5
Installing CLM while JetStream is running	5
Password-protected LGS files	6
Licensing	6

What's New

This is a minor release including support for Windows 11 and CLM version 2.5 as well as bug fixes for stability.

Windows 11 Support

JetStream Enterprise now supports the Windows 11 operating system.

Publish LGS files without SiteMap

To support the export and transfer of projects published to JetStream Enterprise prior to the creation of SiteMaps in Cyclone REGISTER 360, users can now publish LGS files without a SiteMap and open them in:

- Cyclone REGISTER 360 2022.0.1
- Cyclone ENTERPRISE 2022.0.1
- Cyclone 3DR
- TruView (formerly JetStream Viewer) 2022.0.1
- CloudWorx 2022.0.1

These new SiteMap-free LGS files are not compatible with:

- TruView Enterprise
- TruView Cloud

CLM 2.5 Support

JetStream Enterprise now officially supports CLM 2.5.2.1. This new version of CLM is now packaged with the installer.

Bug Fixes

- JetStream Enterprise is now compatible with Intel Core i9 11th gen processors.
- Fixed a bug that could cause misuse of ENTERPRISE Connectors.
- Fixed a bug that caused instability in the Admin tool.

Upgrades & Compatibility

LGS file compatibility

TruView (formerly JetStream Viewer) 2022.1 supports models in LGS files only. LGS files must be published as LGS with a Cyclone PUBLISHER Pro license* from Cyclone CORE 2020.1 or later, the Cyclone REGISTER 360 family 2020.1 or later or published with a Cyclone PUBLISHER Pro license* into JetStream Enterprise 2020.1 or later and then re-published as an LGS.

** Or a Cyclone PUBLISHER Pro equivalent license, which includes Cyclone JetStream PUBLISHER or Cyclone TruView PUBLISHER licenses with active CCP from within the mentioned 2020.1 product versions.*

Models cannot be added to JetStream Enterprise projects and are only supported within an LGS file or Cyclone ENTERPRISE project. Please speak to your sales representative if you are interested in upgrading JetStream Enterprise to Cyclone ENTERPRISE.

Reference the following table to determine if models are supported in your LGS file.

LGS Published from	PUBLISHER License	Supports Adding Models
Cyclone 2020.1	PUBLISHER Standard	✗
Cyclone 2020.1	PUBLISHER Pro	✓
Cyclone 2020.1	JetStream PUBLISHER (with active CPP)	✓
Cyclone 2020.1	TruView PUBLISHER (with active CPP)	✓
Cyclone REGISTER 360 family 2020.1	PUBLISHER Standard	✗
Cyclone REGISTER 360 family 2020.1	PUBLISHER Pro	✓
Cyclone REGISTER 360 family 2020.1	JetStream PUBLISHER (with active CPP)	✓
Cyclone REGISTER 360 family 2020.1	TruView PUBLISHER (with active CCP)	✓
JetStream Enterprise 2020.1	From any version of the Cyclone REGISTER family with PUBLISHER Standard	✗
JetStream Enterprise 2020.1	From Cyclone REGISTER family 2020.1 or later with PUBLISHER Pro	✓
JetStream Enterprise 2020.1	From Cyclone REGISTER family 2020 or earlier with PUBLISHER Pro	✗
JetStream Enterprise 2020.1	From Cyclone REGISTER family 2020.1 or later with JetStream PUBLISHER (with active CPP)	✓
JetStream Enterprise 2020.1	From Cyclone REGISTER family 2020 or earlier with JetStream PUBLISHER (with active CPP)	✗
JetStream Enterprise 2020.1	From Cyclone REGISTER family 2020.1 or later with TruView PUBLISHER (with active CCP)	✓
JetStream Enterprise 2020.1	From Cyclone REGISTER family 2020 or earlier with TruView PUBLISHER (with active CCP)	✗
JetStream Enterprise 2020 or earlier	Any license level	✗
Cyclone 2020 or earlier	Any license level	✗
Cyclone REGISTER 360 family 2020 or earlier	Any license level	✗

Leica JetStream Enterprise Upgrades and Compatibility

When upgrading to the latest version of JetStream Enterprise when primary storage is a network location, it might happen that the JetStream service does not start correctly due to service login credentials being reset with the update. The user should enter the service login credentials and reboot the machine before attempting to restart the service.

Leica Reality Capture Software Products Version Compatibility

JetStream Enterprise requires corresponding releases of Cyclone, the Cyclone REGISTER 360 family, CloudWorx, and TruView (formerly JetStream Viewer) for all features to function correctly:

	Publish background panoramic image data to JetStream Enterprise	Publish HDR Pano images	Publish GeoTags, assets, layers, SiteMaps	View GeoTags, assets, layers SiteMaps	View Pano Imagery	View JSV files published from JetStream Enterprise	Store Snapshots created in TruView (formerly JetStream Viewer)	Publish LGS	Import/Open LGS	Import/View BLK2GO data	Publish BLK2GO data	Publish model-compatible LGS files
<i>Cyclone</i>	9.1.4 or higher	9.2.1 or higher	9.3 or higher	9.3 or higher	-	-	-	9.2 or higher	9.2 or higher	9.5 or higher	9.5 or higher	2020.1 or higher
<i>Cyclone REGISTER 360</i>	1.4 or higher	1.4.1 or higher	1.5 or higher	1.4 or higher	1.4 or higher	-	-	1.5 or higher	-	2020 or higher	2020 or higher	2020.1 or higher
<i>Cyclone REGISTER 360 (BLK Edition)</i>	1.6.2 or higher	1.6.2 or higher	1.6.2 or higher	1.6.2 or higher	1.6.2 or higher	-	-	1.6.2 or higher	-	2020 or higher	2020 or higher	2020.1 or higher
<i>JetStream Enterprise</i>	-	-	-	1.5 or higher	-	-	1.6 or higher	1.5 or higher	1.5 or higher	2020 or higher	2020 or higher	2020.1 or higher
<i>TruView (formerly JetStream Viewer)</i>	-	-	-	1.5 or higher	1.2 or higher	1.3 or higher	1.6 or higher*	-	1.5 or higher	1.3 or higher	-	2020.1 or higher
<i>CloudWorx AutoCAD</i>	-	-	-	6.4 or higher	6.1 or higher	-	-	-	6.4 and higher	-	-	-
<i>CloudWorx MicroStation</i>	-	-	-	5.1.4 or higher	5.1.4 or higher	-	-	-	5.2 and higher	-	-	-
<i>CloudWorx PDMS</i>	-	-	-	2.2 and higher	2.0.1 or higher	-	-	-	2.2 and higher	-	-	-
<i>CloudWorx Revit</i>	-	-	-	2.2 or higher	2.2 or higher	-	-	-	2.2 and higher	-	-	-
<i>CloudWorx Navisworks</i>	-	-	-	1.1 or higher	1.0.2 or higher	-	-	-	1.1 and higher	-	-	-
<i>CloudWorx BricsCAD</i>	-	-	-	1.0 or higher	1.0 or higher	-	-	-	1.0 and higher	-	-	-
<i>CloudWorx for SOLIDWORKS</i>	-	-	-			-	-	-	1.0 and higher	-	-	-
<i>Cyclone 3DR</i>	-	-	-	19.1 or higher	19.1 or higher	-	-	-	19.1 or higher	19.1 or higher	-	-

*TruView (formerly JetStream Viewer) can “publish” LGS files via the Save As command only when data was opened as an LGS file and Snapshots, GeoTags, or Models have been added, modified, or deleted.

Migrating locations

When migrating a JetStream Enterprise server from one location to another, first upgrade the old server to the latest version then install and license JetStream Enterprise in the new location and use the relocate function to move data from the old server to the new one.

If you have installed and licensed JetStream Enterprise before upgrading your old server, locate your server db file in C:\ProgramData\Leica Geosystems\JetStream named ServerDb.db. This file should be copied to the new server to migrate your service. Check that the JetStream service is still running.

Deprecated features

Leica Geosystems strives to provide support for the widest array of operating systems and file formats possible as is reasonable given current technologies and support from third-party partners. With each release, we review our list of currently supported formats and operating systems in line with industry trends and announced product terminations.

Leica Geosystems may add or terminate support for a file format during any release. Obsolete operating systems will be supported for six months after their announced termination or the next major software release, whichever comes first. Server products will be supported in alignment with Leica’s Client License Manager (CLM) supported servers to guard users against incompatibility.

Please reference the Leica Geosystems Deprecated Features policy for a complete listing of discontinued features, formats and operating systems.

JetStream Enterprise 2020:

- JSV files are no longer published. Users should use the new LGS format.

JetStream Enterprise 2022

- CLM versions prior to 2.5 are no longer supported.

Known Issues

Usage file reporting issue for EnterpriseElite Customers

When using the standalone CLM installer, some EnterpriseElite users may find that the usage file (year-month.db) normally located at *C:\Leica Geosystems\CLM\LogFiles* does not get produced.

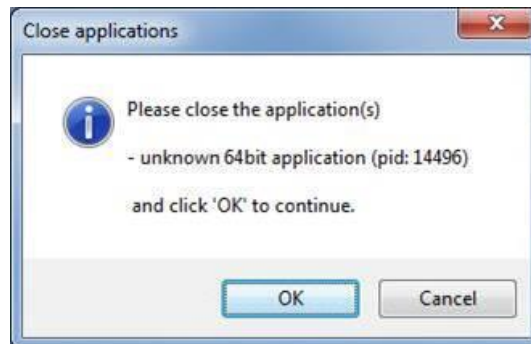
Please ensure your LGS.opt (located here: *C:\Program Files (x86)\Common Files\Leica Geosystems\License-Server\lgs.opt*) file looks like this:

```
DEBUGLOG +"C:\Leica Geosystems\CLM\LogFiles\lgs.log"  
NOLOG IN  
TIMEOUTALL 240  
ENABLE_DB_HISTORY 1  
PATH_DB_HISTORY C:\Leica Geosystems\CLM\LogFiles
```

ENABLE_DB_HISTORY should be set to **1** in this file. Please copy the file to a new location, edit it and re-save if the file says it's read-only.

Installing CLM while JetStream is running

During installation of CLM, users may encounter the following error message. This is commonly due to a service like JetStream running in the background.



To enable the successful installation of CLM, please follow these steps:

- Launch the task manager
- Select the Services tab
- Look up the process with the PID (Process ID) shown in the Close applications dialog
- In this case it is JetStream
- Terminate the process so that CLM can be installed
- After CLM is installed, click on the Services button in the Task Manager and restart the service

Password-protected LGS files

Passwords cannot be recovered or changed for either projects or files but may be removed and re-added for projects within JetStream Enterprise or re-published from Cyclone or the Cyclone REGISTER 360 family.

Cyclone does not accept LGS files published from JetStream Admin that are protected with a password that includes non-ASCII characters.

Licensing

All users with currently valid CCP, or with CCP valid as late as 15 June 2020, can run this new version with no new license required